

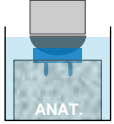
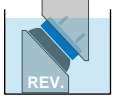
Summary of the most commonly used test methods

Total Shoulder Replacement

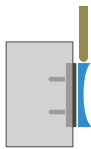
Mechanical testing shoulder replacement



S10 - Wear testing of shoulder prostheses

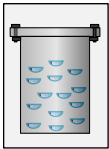


ASTM F2028 - Standard test methods for dynamic evaluation of glenoid loosening or disassociation



ASTM F1829 - Standard test method for static evaluation of anatomic glenoid locking mechanism in shear

Aging



ASTM F2003 - Standard practice for accelerated aging of ultra-high molecular weight polyethylene after gamma irradiation in air

Specifications and requirements



ASTM F1378 - Standard specification for shoulder prostheses



ISO 21534 - Non-active surgical implants — Joint replacement implants — Particular requirements

For further information please contact:

SpineServ GmbH & Co. KG, Soefflinger Strasse 100, 89077 Ulm, Germany

Phone: +49 (0)731 175 6788

experts@spineserv.de

www.spineserv.com