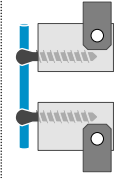


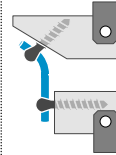
Summary of the most commonly used test methods

Spinal Implants

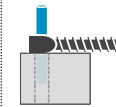
Internal fixators and plates



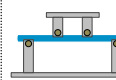
ASTM F1717 – Standard test methods for spinal implant constructs in a vertebrectomy model



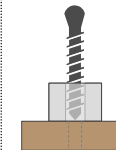
ASTM F2706 - Standard test methods for occipital-cervical and occipital-cervical-thoracic spinal implant constructs in a vertebrectomy model



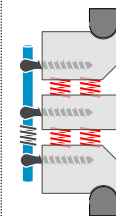
ASTM F1798 - Standard test method for evaluating the static and fatigue properties of interconnection mechanisms and subassemblies used in spinal arthrodesis implants



ASTM F2193 - Standard specifications and test methods for components used in the surgical fixation of the spinal skeletal system

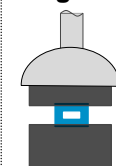


ASTM F543 - Standard specification and test methods for metallic medical bone screws

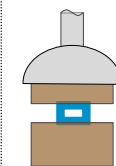


ISO 12189 - Implants for surgery - mechanical testing of implantable spinal devices - fatigue test method for spinal implant assemblies using an anterior support

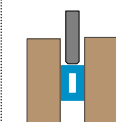
Cages and vertebral body replacements



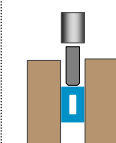
ASTM F2077 - Test methods for intervertebral body fusion devices



ASTM F2267 - Standard test method for measuring load induced subsidence of intervertebral body fusion device under static axial compression



S01 - Expulsion test with intervertebral body fusion or motion-preserving implants



S07 - Impaction test with spinal interbody implants

For further information please contact:

SpineServ GmbH & Co. KG, Soefflinger Strasse 100, 89077 Ulm, Germany

Phone: +49 (0)731 175 6788

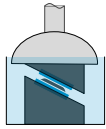
experts@spineserv.de

www.spineserv.com

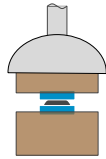
Summary of the most commonly used test methods

Spinal Implants

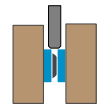
Intervertebral disc prostheses



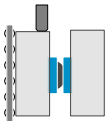
ASTM F2346 - Standard test methods for static and dynamic characterization of spinal artificial discs



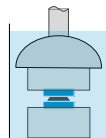
ASTM F2267 - Standard test method for measuring load induced subsidence of intervertebral body fusion device under static axial compression



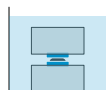
S01 - Expulsion test with intervertebral body fusion or motion-preserving implants



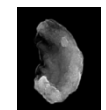
S02 - Luxation test with artificial discs



S03 - Creep test with artificial discs

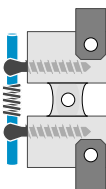


ISO 18192-1 - Implants for surgery - wear of total intervertebral spinal disc prostheses - Part 1: loading and displacement parameters for wear testing and corresponding environmental conditions for test
ASTM F2423 - Standard guide for functional, kinematic, and wear assessment of total disc prostheses

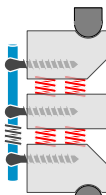


ISO 17853 - Standard practice for characterization of particles
ASTM F1877 - Wear of implant materials - polymer and metal wear particles - isolation and characterization

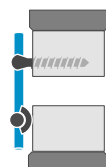
Extradiscal motion preserving implants



ASTM F2624 - Standard test method for static, dynamic, and wear assessment of extra-discal single level spinal constructs



ISO 12189 - Implants for surgery - mechanical testing of implantable spinal devices - fatigue test method for spinal implant assemblies using an anterior support



ASTM F2790 - Standard practice for static and dynamic characterization of motion preserving lumbar total facet prostheses



ASTM F2694 - Standard practice for functional and wear evaluation of motion-preserving lumbar total facet prostheses

For further information please contact:

SpineServ GmbH & Co. KG, Soefflinger Strasse 100, 89077 Ulm, Germany

Phone: +49 (0)731 175 6788

experts@spineserv.de

www.spineserv.com